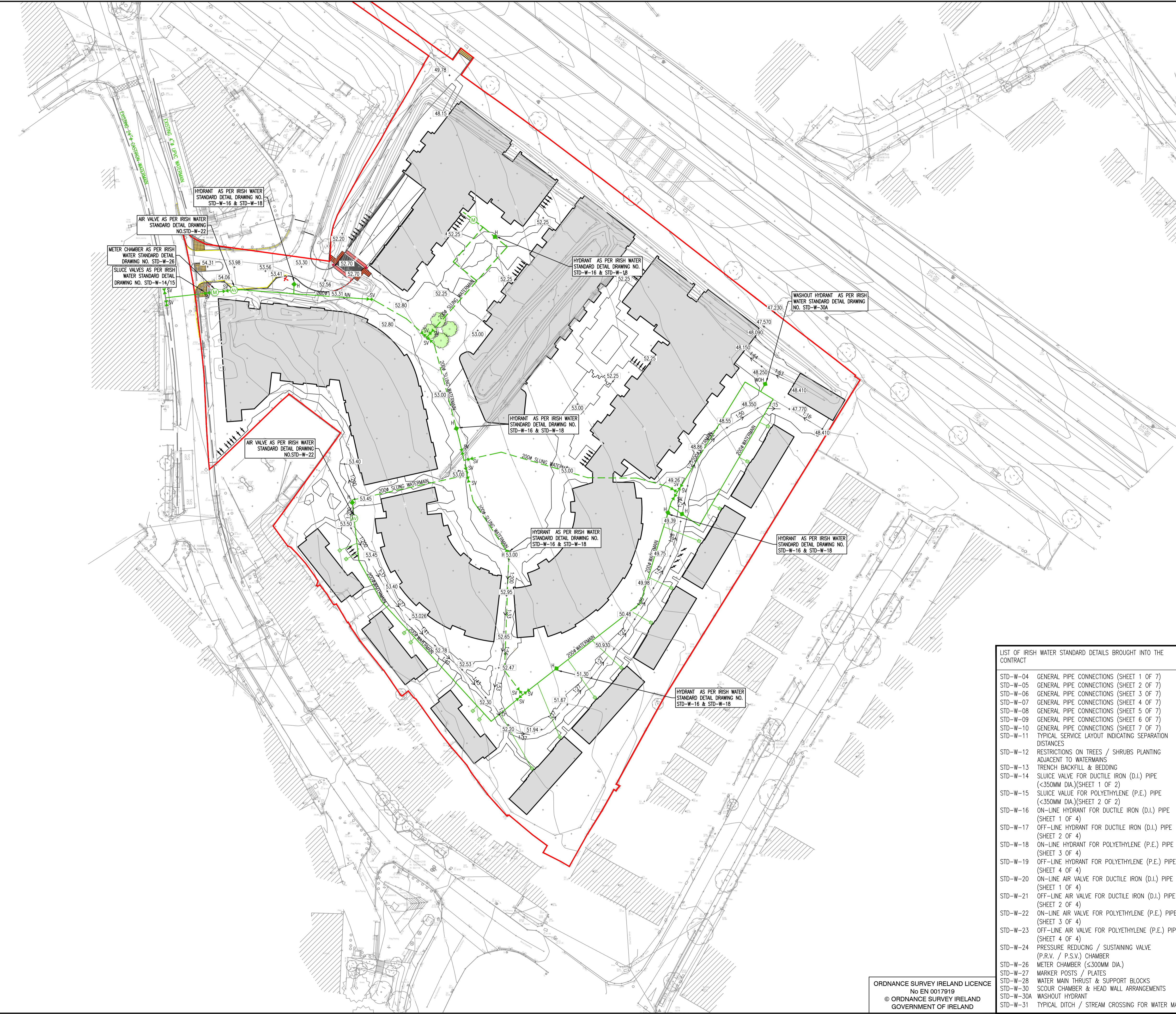
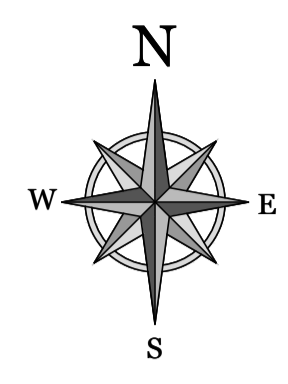


- NOTES:**
- GENERAL NOTES:**
1. ALL DRAWINGS TO BE CHECKED BY CONTRACTOR ON SITE AND ENGINEER INFORMED OF DISCREPANCIES BEFORE WORK COMMENCES
  2. THE CONTRACTOR SHALL SATISFY HIMSELF AS TO THE ACCURACY OF EXISTING DRAINAGE LEVELS AND LOCATION OF EXISTING SERVICES ON SITE PRIOR TO COMMENCEMENT OF WORKS ON SITE
  3. ALL DIMENSIONS AND LEVELS ARE IN METRES UNLESS NOTED OTHERWISE
  4. ALL LEVELS ARE IN METERS AND ARE RELATED TO ORDNANCE DATUM. CO-ORDINATES RELATE TO ITM.
- DRAWING SPECIFIC NOTES:**
1. ALL WATERMANS VALVES AND FITTINGS SHALL BE CONSTRUCTED IN ACCORDANCE WITH THE IRISH WATER STANDARD DETAILS AND IRISH WATER CODE OF PRACTICE FOR WATER INFRASTRUCTURE
  2. WATERMANS SHALL BE HDPE, PE100, SDR17 TO IS EN 12201 PART 2:2011 AND IS EN 12201-3:2011 ALL SLUNG WATERMAN MATERIALS TO MAE ENGINEERS SPECIFICATION.
  3. CONNECTION BETWEEN EXISTING AND PROPOSED WATERMANS TO BE CARRIED OUT IN ACCORDANCE WITH IRISH WATER STANDARD DETAILS STD-W-03 TO STD-W-10.
  4. ANCHOR BLOCKS TO BE POSITIONED AT DEAD ENDS, TEES, BENDS AND AT EACH SIDE OF HYDRANTS AND VALVES IN ACCORDANCE WITH THE REQUIREMENTS OF IRISH WATER STANDARD DETAIL STD-W-28 (WATER MAIN THRUST AND SUPPORT BLOCKS) DISMANTLING JOINTS TO BE INSTALLED AT EACH SLUICE VALVE AS PER IRISH WATER STANDARD DETAIL STD-W-15.
  5. CONNECTION TO INDIVIDUAL HOUSES IN ACCORDANCE WITH IRISH WATER STD-W-01.
  6. INSTALLATION OF SLUICE VALVES, AIR VALVES AND HYDRANTS SHALL BE IN ACCORDANCE WITH IRISH WATER'S STANDARD DETAILS STD-W-14 TO STD-W-23.
  7. MARKER POSTS AND PLATES ARE TO BE PROVIDED IN ACCORDANCE WITH IRISH WATER STANDARD DETAIL STD-W-27.
  12. CONNECTION TO INDIVIDUAL HOUSES IN ACCORDANCE WITH IRISH WATER STD-W-03.
  13. CONNECTION TO EXISTING WATERMANS TO BE COORDINATED BY THE CONTRACTOR WITH IRISH WATER AND/OR THE LOCAL AUTHORITY.
  14. CONTRACTOR TO LIAISE WITH IRISH WATER AND / OR THE LOCAL AUTHORITY AS REQUIRED REGARDING TESTING, CLEANSING AND STERILISATION OF WATERMANS
  15. WATERMANS TO BE PRESSURE TESTED IN ACCORDANCE WITH THE REQUIREMENTS OF IRISH WATER AND IEN 4-01-03, GUIDE TO TESTING OF PRESSURE PIPES AND FITTINGS FOR USE BY PUBLIC WATER SUPPLIERS, OCTOBER 2015. A FORMAL TEST REPORT SHALL BE SUBMITTED TO THE ENGINEER DETAILING THE TEST CARRIED OUT.



**LEGEND**

- SITE BOUNDARY
- 100Ø WATERMAIN
- 100Ø SLUNG WATERMAIN
- SV SLUICE VALVES AS PER IRISH WATER STANDARD DETAIL STD-W-14/15
- AV AIR VALVE AS PER IRISH WATER STANDARD DETAIL STD-W-20/22
- BOUNDARY BOX AND 200mm ØØ PE80 SERVICE CONNECTION
- H HYDRANTS AS PER IRISH WATER STANDARD DETAIL STD-W-16/18
- WOH WASH OUT HYDRANTS AS PER IRISH WATER STANDARD DETAIL STD-W-30A
- SCOUR VALVE AS PER IRISH WATER STANDARD DETAIL STD-W-30
- M METER CHAMBER AS PER IRISH WATER STANDARD STD-W-26
- EXISTING WATERMAIN TO BE DECOMMISSIONED
- 300Ø W/M EXISTING WATERMAIN
- EXISTING SLUICE VALVE
- EXISTING HYDRANT

**LIST OF IRISH WATER STANDARD DETAILS BROUGHT INTO THE CONTRACT**

STD-W-04	GENERAL PIPE CONNECTIONS (SHEET 1 OF 7)
STD-W-05	GENERAL PIPE CONNECTIONS (SHEET 2 OF 7)
STD-W-06	GENERAL PIPE CONNECTIONS (SHEET 3 OF 7)
STD-W-07	GENERAL PIPE CONNECTIONS (SHEET 4 OF 7)
STD-W-08	GENERAL PIPE CONNECTIONS (SHEET 5 OF 7)
STD-W-09	GENERAL PIPE CONNECTIONS (SHEET 6 OF 7)
STD-W-10	GENERAL PIPE CONNECTIONS (SHEET 7 OF 7)
STD-W-11	TYPICAL SERVICE LAYOUT INDICATING SEPARATION DISTANCES
STD-W-12	RESTRICTIONS ON TREES / SHRUBS PLANTING ADJACENT TO WATERMANS
STD-W-13	TRENCH BACKFILL & BEDDING
STD-W-14	SLUICE VALVE FOR DUCTILE IRON (D.I.) PIPE (<350MM DIA.)(SHEET 1 OF 2)
STD-W-15	SLUICE VALVE FOR POLYETHYLENE (P.E.) PIPE (<350MM DIA.)(SHEET 2 OF 2)
STD-W-16	ON-LINE HYDRANT FOR DUCTILE IRON (D.I.) PIPE (SHEET 1 OF 4)
STD-W-17	OFF-LINE HYDRANT FOR DUCTILE IRON (D.I.) PIPE (SHEET 2 OF 4)
STD-W-18	ON-LINE HYDRANT FOR POLYETHYLENE (P.E.) PIPE (SHEET 3 OF 4)
STD-W-19	OFF-LINE HYDRANT FOR POLYETHYLENE (P.E.) PIPE (SHEET 4 OF 4)
STD-W-20	ON-LINE AIR VALVE FOR DUCTILE IRON (D.I.) PIPE (SHEET 1 OF 4)
STD-W-21	OFF-LINE AIR VALVE FOR DUCTILE IRON (D.I.) PIPE (SHEET 2 OF 4)
STD-W-22	ON-LINE AIR VALVE FOR POLYETHYLENE (P.E.) PIPE (SHEET 3 OF 4)
STD-W-23	OFF-LINE AIR VALVE FOR POLYETHYLENE (P.E.) PIPE (SHEET 4 OF 4)
STD-W-24	PRESSURE REDUCING / SUSTAINING VALVE (P.R.V. / P.S.V.) CHAMBER
STD-W-26	METER CHAMBER (<300MM DIA.)
STD-W-27	MARKER POSTS / PLATES
STD-W-28	WATER MAIN THRUST & SUPPORT BLOCKS
STD-W-30	SCOUR CHAMBER & HEAD WALL ARRANGEMENTS
STD-W-30A	WASHOUT HYDRANT
STD-W-31	TYPICAL DITCH / STREAM CROSSING FOR WATER MAIN

ORDNANCE SURVEY IRELAND LICENCE  
No EN 0017919  
© ORDNANCE SURVEY IRELAND  
GOVERNMENT OF IRELAND

P1	20/09/19	FOR COS	JVS	BK
REV	DATE	DESCRIPTION	BY	CHKD
SUITABILITY		SD - WORK IN PROGRESS		

**PLANNING**

DESIGNED	BK	PREPARED	DJG
DATE	APR 2019	CHECKED	DJR

DBFL Consulting Engineers  
www.info@dbfl.ie site: www.dbfl.ie

**PROJECT**  
**PROPOSED DEVELOPMENT AT CORNELSCOURT**

**DRG. TITLE**  
**WATERMAIN LAYOUT**

**CLIENT**  
**CORNEL LIVING LIMITED**

SCALE	FILE REF.
1:500 @A1	180208-DBFL-XX-XX-DR-C-3002
DRG. NO.	
180208-DBFL-XX-XX-DR-C-3002	P1